

Draft – For discussion purposes only



WMA GSA BOARD OF DIRECTORS MEETING

26 FEBRUARY 2025

PROPOSITION 68 GRANT FUNDED PROJECTS UPDATE

IMPLEMENTATION RESPONSIBILITIES

- EKI is working on 5 out of 8 components for WMA

Components	WMA
1. Grant Administration	SYRWCD
2. Well Extraction Measurement and Reporting	
a) Administration/Coordination	EKI
b-e) <i>Category Tasks Required by DWR Agreement*</i>	EKI
3. SGMA Rate Study	Raftelis
4. Annual Report and Periodic GSP Evaluation	Stetson Engineers
5. Monitoring Improvements	
a) Administration/Coordination	EKI
b-e) <i>Category Tasks Required by DWR Agreement*</i>	EKI
6. Storm Water Capture	EKI
7. Water Use Efficiency	EKI
8. Recycled Water Feasibility Study	EKI



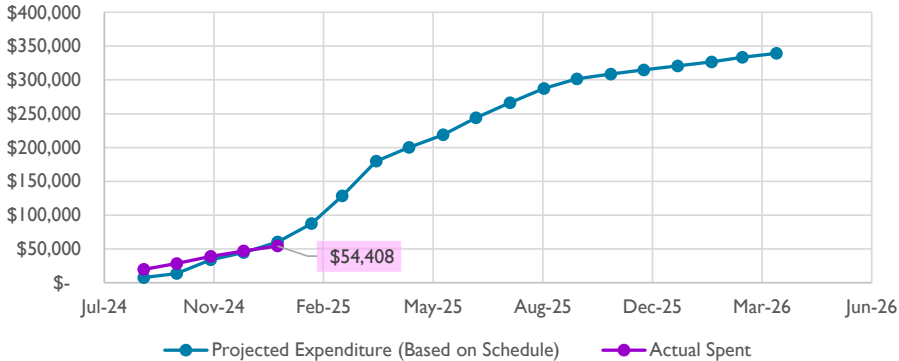
* Environmental/Design, Implementation/Construction, Monitoring/Assessment, Engagement/Outreach.

COMPONENT 2 AND 5 PROGRESS TO DATE

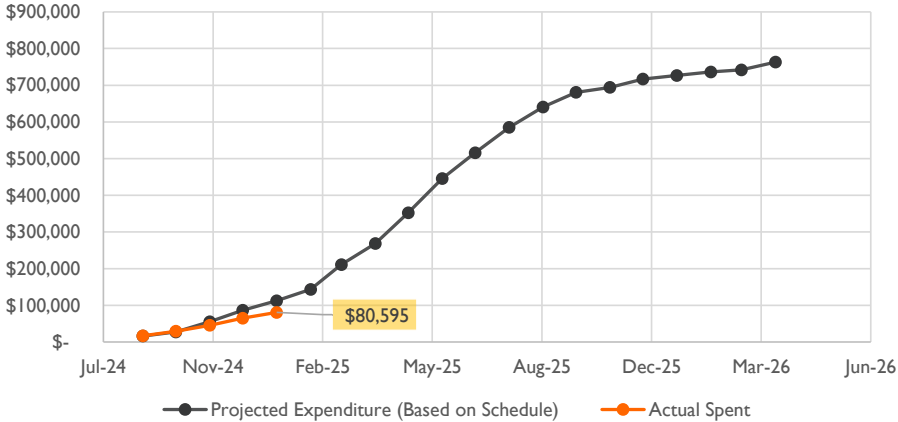
Well Extraction Measurement And Reporting (Comp 2) and Monitoring Improvements (Comp 5)

- Landowner outreach [**critical path**]
 - Comp 2: identified 2 demonstration sites, and **outreach and screening process for 3rd and final site**. Land IQ scheduled to begin weather station installation the week of March 24, 2025.
 - Comp 5: Well owner outreach to improve and expand Monitoring Well Network; completed 2nd quarterly seawater intrusion sampling; conducted stream gage site visits, stream flow measurements, preliminary design, and permit research; coordinate GDE verification study plans between GSAs.
- Draft access agreement and NOE materials.
 - Two access agreements are under review
 - Identified streamlined NOE filing process

Cumulative Budget for Component 2 WMA



Cumulative Budget for Component 5 WMA

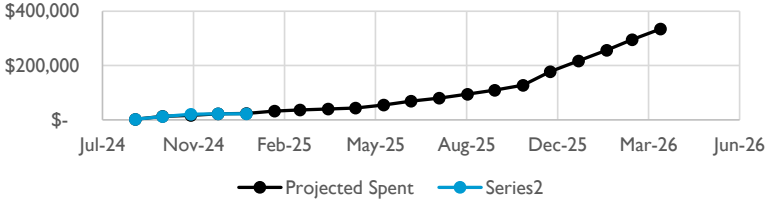


PROGRESS TO DATE – COMPONENT 6, 7 AND 8

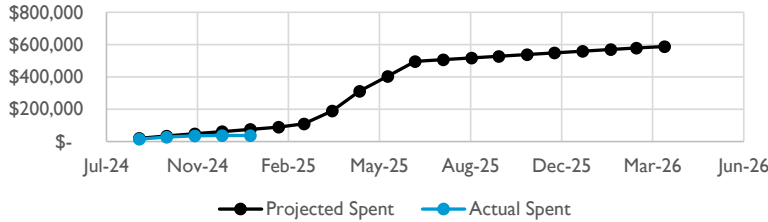
Stormwater Capture, Water Efficiency, And Recycled Water

- Component 6: conducted desktop study, identified potential stormwater capture sites.
- Component 7: compiled and collated data received; updated water conservation tracking tool to evaluate the data.
- Component 8: Data review; fishery and legal support agreement development.

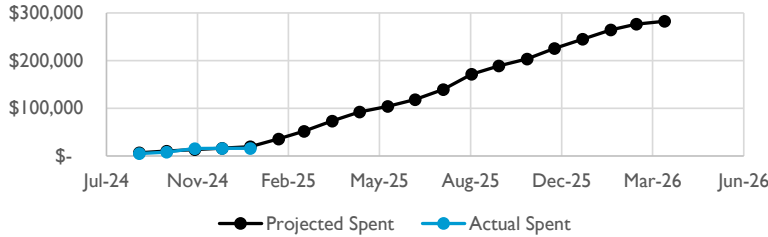
Cumulative Budget for Component 6



Cumulative Budget for Component 7



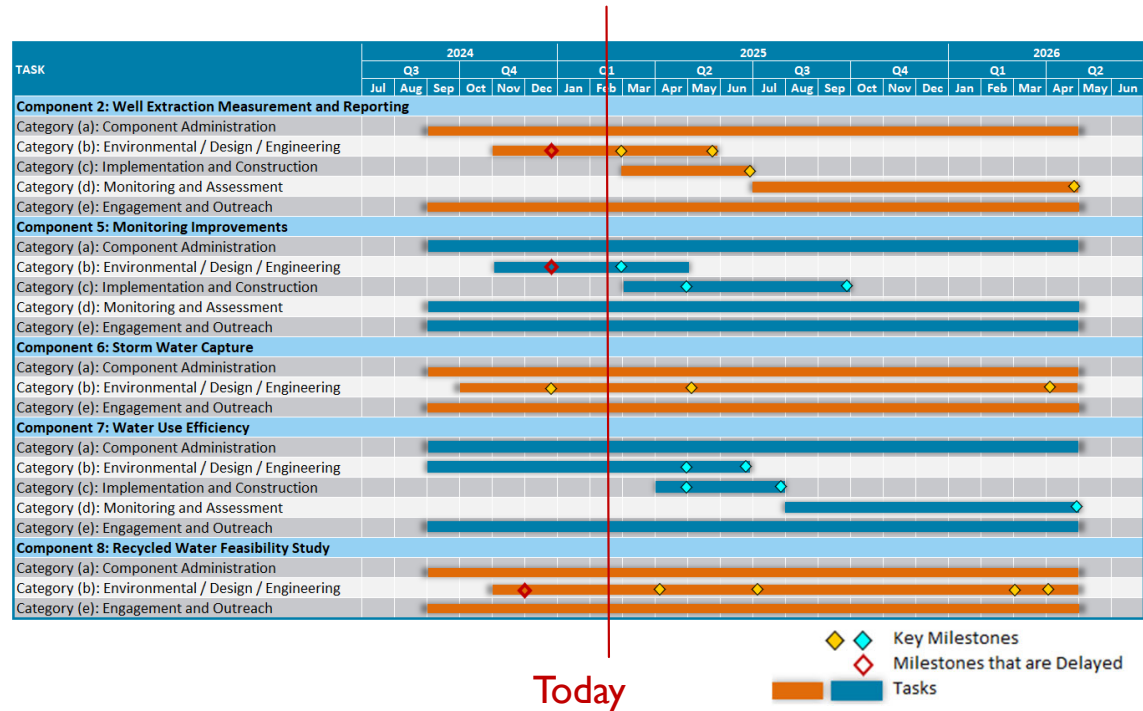
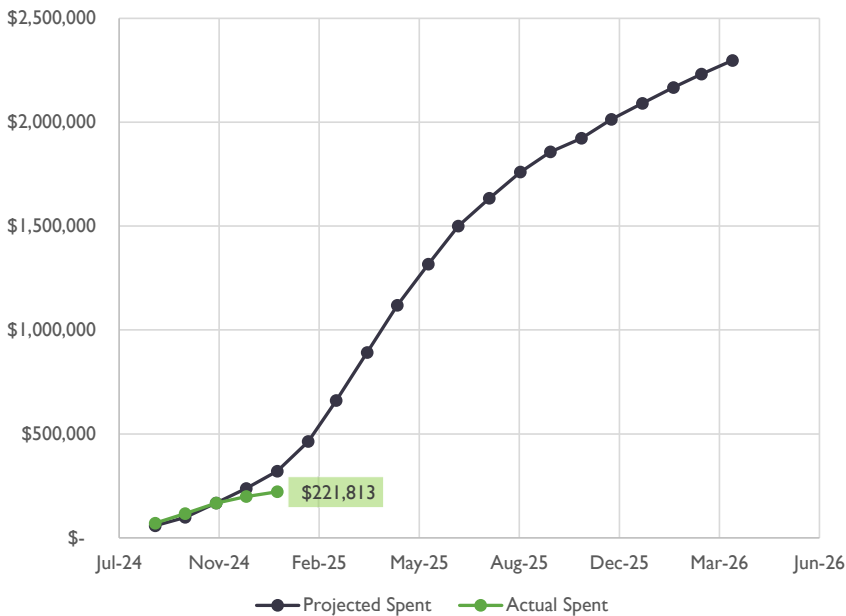
Cumulative Budget for Component 8



TASK COMPLETION AND BUDGET ON TRACK

- Schedule depends on cooperating landowners, completion of access agreements, and NOE approvals by DWR.
- Project expenses will increase when consultants initiate infrastructure for demonstration projects (scheduled to begin during March 2025).

Cumulative Budget for All Components (WMA)



THREE MONTH LOOK AHEAD

Schedule

March

- Complete screening and outreach for stormwater capture sites.
- Initiate preparation of TM I for Comp 7.
- Plan stakeholder outreach for Comp 8

April

- Develop work plan and solicit contractor costs for Stormwater Capture verification studies.
- Finalize Water Efficiency Study TM I.
- Schedule Recycled Water Feasibility Study stakeholder meetings.

May

- **Finalize access agreements with 3 landowners and submit NOEs.**
- Weather station construction (scheduled for week of 3/24).
- Infrastructure improvements for extraction measurement methods.
- Finalize new Monitoring Well location.
- Distribute RFP for well design and construction oversight services.
- Initiate memorandum that summarizes site-specific information for project sites.

- Initiate weather station data collection.
- Complete infrastructure improvements for extraction measurement methods and initiate data collection protocols.
- Finalize monitoring well site and preliminary well design.

- Develop well specifications and prepare bid process for well construction.
- Initiate GSA development of groundwater extraction measurement program rules and regulations.

Red identifies critical path task.

= tasks for comp 2 and 5

= tasks for comp 6, 7, and 8